

AUAC00112 Dulux Acratex Venetian Plaster Tonachino

Introduction

Part A
194X2070-24KG

Description and Image

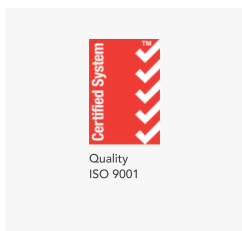
Venetian Plaster Tonachino is a traditional Interior Venetian coarse-grain plaster from yesteryear.
It has a classic natural mineral look yielding a subdued satiny multi coloured marble effect
194X2070-24KG Venetian Plaster Tonachino

Venetian Plaster Tonachino is the perfect choice to decorate high-hand interiors and is widely used in foyers, hotel reception areas and concert halls.

It is an eco-friendly product, obtained from selected marble powders and genuine slaked lime baked in wood-fire kilns and aged for 8-10 months.



Standards And Certifications



Certified System: Quality
ISO 9001



Certified System:
Environment ISO 14001

Standards and Certifications

For details on these standards and certifications please reference the 'Approvals' section at the beginning of this document.
Please contact your DuluxGroup representative for specific information on ESD credits / points.

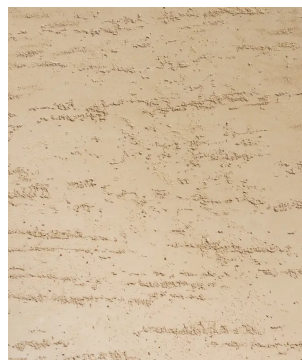
Uses

Venetian Plaster Tonachino is particularly suited to the preservative restoration of old historical buildings such as churches, palaces or villas interior's; to create surfaces of elevated aesthetic value in all settings whether modern or classic: halls, stairways, bathrooms, living rooms; to add a touch of elegance to the most refined public places such as hotels, restaurants, shops, etc.

Typical Specifications

Typical System

Title:
Interior Plasterboard



Preparation Guide
Refer Full Du Spec specification Sheet
AUAC00476 Dulux Acratex Venetian Plaster Tonachino / Matt Glaze on New Plasterboard [Interior]

Coat	Product	Spread Rate (m ² /L):	WFT (micron):	DFT (micron)
1st Coat	VENETIAN PLASTER QUARTZ PRIMER	8	125	54
2nd Coat	VENETIAN PLASTER TONACHINO	2.538	393	262
3rd Coat	VENETIAN PLASTER TONACHINO	2.538	393	262
4th Coat	Venetian Plaster Matt Glaze	11.3	88	30
Minimum System DFT: 608				

Notes:
Venetian Plaster Tonachino can be finished a a number of Traditional and imaginative was to product a number of effects.
E.g. Travertino a traditional vertical or horizontal scratch finish

Typical Properties

V.O.C. Content
0.1

Clean Up
water

Sizes
24kg

Meets GBCA V.O.C. Requirements?
Yes
Total Volatile Organic Content (TVOC) values are calculated in accordance to the stated methodology within Green Star Technical Manuals. The TVOC content is theoretically calculated as the sum total of the known VOC values of the product’s raw material components. These materials include the base paint plus additional low VOC tinter required for non-factory packaged colours.

Application Methods
 **Trowel**

Specifications	Solids by Volume		
	Min	Max	Recommended
Wet Film Per Coat (microns)	327	489	380
Dry Film Per Coat (microns)	233	349	271
Theoretical Spread Rate (m ² /L)	3.067	2.045	2.632

Drying Time			
	Min	Max	Recommended
Recoat Time (min/hours)	<input type="text" value="120"/>	<input type="text" value="180"/>	<input type="text"/>
Typical Property Notes Note; 3.067 m2/L equates to 0.6 kg/m2 per coat 2.632 m2/L equates to 0.7 kg/m2 per coat OR approx 34.3m2 per pail per coat 2.045 m2/L equates to 0.9 kg/m2 per coat Lower spread rates for more patterned finishes			

Application Guide
Surface Preparation Interior: Preparation: on civil plaster or old mineral paints as long as they are not powdery, are in good condition and sufficiently rough, apply directly. On supports of the type: gesso, gypsum, plasterboard, old synthetic or powdery paints, stucco smoothing etc, apply a coat of primer to the point of saturation and subsequently a coat of Venetian Plaster Tonachino in advance with appropriate products the presence of stains of various types or any saline efflorescence. In the case of irregular supports, whether interior or exterior, with uneven absorption rates, restored plaster, stains, etc., the application of a layer of Intocalce with a steel trowel is recommended in order to even out the surface and create the ideal base for even absorption.
Application Procedure and Equipment Apply one or two layers of Venetian Plaster Tonachino with a steel trowel or spatula letting each layer dry before proceeding in order to obtain a perfectly smooth surface. At this point on the last layer, which has dried slightly, making sure that it is neither completely dry and nor excessively wet, proceed to the polishing by going over the surface repeatedly with a spatula, pressing hard. To confer an increased degree of water repellency and compactness to the surface apply, after about 2/3 hours, with a steel trowel and pressing energetically, a layer of Cere D'ARTE Wax or a layer of virgin beeswax

Health and Safety	
SDS Number DLX002813	SDS Link View SDS Link
Using Safety Precautions Safety Directions: Causes skin irritation. Causes serious eye damage. Keep out of reach of children. Read the label before opening or using. Avoid breathing vapour. Wear protective clothing, gloves, eye/face protection and suitable respirator/dust mask as required. Wash contaminated clothing before re-use. Wash hands, face and all exposed skin thoroughly after handling. Store in a well-ventilated place and away from oxidising agents, acids and foodstuffs. Do not empty into drains.	
Please refer to SDS Link. In case of emergency, please call 1800 220 770.	

Precautions and Limitations

This product data sheets shall be read in conjunction with the Dulux specification.

To ensure colour uniformity and for optimum performance, Dulux recommend a full coating system including a Membrane topcoat.

For **all** systems, the Texture &/or Base Coat should be tinted in accordance with Tint Guide to the specified topcoat colour (or a colour as close as possible to the specified colour as product and Acratex tint rules allow).

Important: Not all colours are suitable for exterior use.

Ensure that you have adequate tinted stock to complete the job in one application.

All material must be thoroughly cross-mix to ensure tint uniformity.

It is recommended to hold a volume of finish material for future maintenance touch-ups

Practical spreading rates will vary from quoted theoretical figures depending on substrate porosity, surface roughness, overspray losses, application methods and environmental conditions (e.g. wind).

- Do not apply paint if Relative Humidity is above 85% or temperature is within 3°C of Dew Point.
- Do not apply if the surface temperature is greater than 40°C or below 10°C, or likely to fall below 10°C during the application or drying period.
- Dry times apply to a single coat at recommended spread rate and at 25°C and 50% Relative Humidity
- Allow longer times under cool, moist, or still conditions and or when applied at high film builds.
- Protect from dew, rain and frost for 48 hours when apply at the recommended spread rate.
- Avoid application in hot, windy conditions or on hot surfaces cool the surface by hosing with water and paint the cool damp surface.
- The exterior texture coatings should be cleaned on a regular basis.
- This will help maintain your overall aesthetic appearance and preserve your Acratex Texture coating system.

Cleaning once every year will remove light soil as well as grime and airborne pollutants refer Dulux Acratex Care & Maintenance Guide.

Transport and Storage

Line Shade /Pack A

194X2070-24kg

Size:

Weight:

24kg

24kg

Further Information

Venetian Plaster Web Page

Disclaimer

This Data Sheet is copyright to DuluxGroup (Australia) Pty Ltd and/or DuluxGroup (New Zealand) Pty Ltd (collectively, 'Dulux'). It may not be varied or altered without the prior written consent of Dulux, and if it is, Dulux has no responsibility or liability for those variations.

Unless Dulux has provided you with a customised, project-specific specification, this Data Sheet does not represent that any particular product or product system will be suitable for your project.

Any information provided in this Data Sheet is given in good faith and is believed by Dulux to be correct at the time of publication. Products and coating systems can be expected to perform as indicated in this Data Sheet, provided the substrate is in good condition, the coatings are applied by a suitably experienced and skilled applicator, and the preparation, application and maintenance is followed strictly as set out in this Data Sheet, and as recommended on the applicable Safety Data Sheets for the relevant products, available from www.duspecplus.com.au. Climatic conditions at application time can affect product suitability and performance.

The correct colour or colour match is the responsibility of the applicator. Colours will change over time and Dulux does not guarantee that the same colour newly mixed will match a colour applied earlier which has been subjected to weathering or other change elements. No product colour is guaranteed against colour change.

Where any liability of Dulux in respect of this Data Sheet cannot by law be excluded, Dulux's liability is limited, as permitted by law and at Dulux's option, to resupply of the relevant products or services or to reimbursing the cost of those products or services.

WHERE LEAD MAY BE PRESENT: The asset manager is responsible for verifying the presence of lead and determining whether to remove or encapsulate the lead. If lead is present, the work must be done in strict accordance with AS 4361 Parts 1 and 2 and Worksafe Australia guidelines.